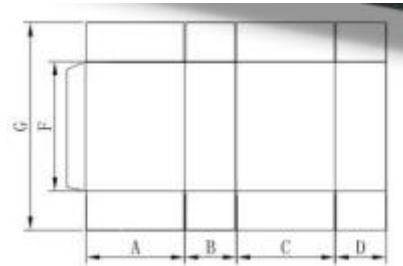


## Corrugated Carboard Cox Producing Machine

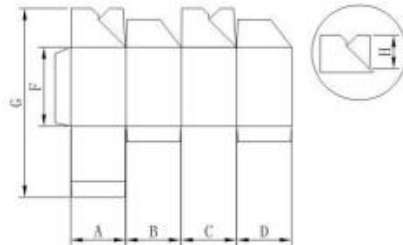
Sizes for one point gluing

Size / model	1250E	1450E	1650E	1850E	2050E
A + B + C + D	200 – 1.200 mm	200 – 1.400 mm	200 – 1.600 mm	200 – 1.800 mm	200 – 2.000 mm
Min. C + D	100 mm	100 mm	100 mm	150 mm	140 mm
Min. D	25 mm	25 mm	25 mm	25 mm	25 mm
Min. F	100 mm	100 mm	100 mm	100 mm	100 mm
G	150 – 800 mm	150 – 800 mm	150 – 800 mm	150 – 800 mm	150 – 800 mm



Sizes for lock bottom

Size / model	1250E	1450E	1650E	1850E	2050E
A + B + C + D	250 – 1.150 mm	250 – 1.350 mm	250 – 1.550 mm	380 – 1.750 mm	380 – 1.950 mm
Min. C + D	125 mm	125 mm	125 mm	190 mm	190 mm
Min. D	25 mm	25 mm	25 mm	25 mm	25 mm
Min. F	100 mm	100 mm	100 mm	100 mm	100 mm
G	150 – 800 mm	150 – 800 mm	150 – 800 mm	150 – 800 mm	150 – 800 mm
Min. H	30 mm	30 mm	30 mm	30 mm	30 mm



Technical details

Parameter / model	1250E	1450E	1650E	1850E	2050E
Maximal speed	280 m / min	280 m / min	280 m / min	280 m / min	280 m / min
Suitable for	Corrugated cardboard type A / B / E / F				
Glue type	Water based				
Power requirements	380 V / 50 Hz				
Installed power	11,5 kW	11,5 kW	11,5 kW	15 kW	15 kW
Weight	8.000 kg	8.500 kg	9.000 kg	9.500 kg	10.000 kg
Machine size ( mm)	14.500 x 2.000 x 1.700	14.500 x 2.200 x 1.700	14.500 x 2.400 x 1.700	14.500 x 2.600 x 1.700	14.500 x 2.800 x 1.700